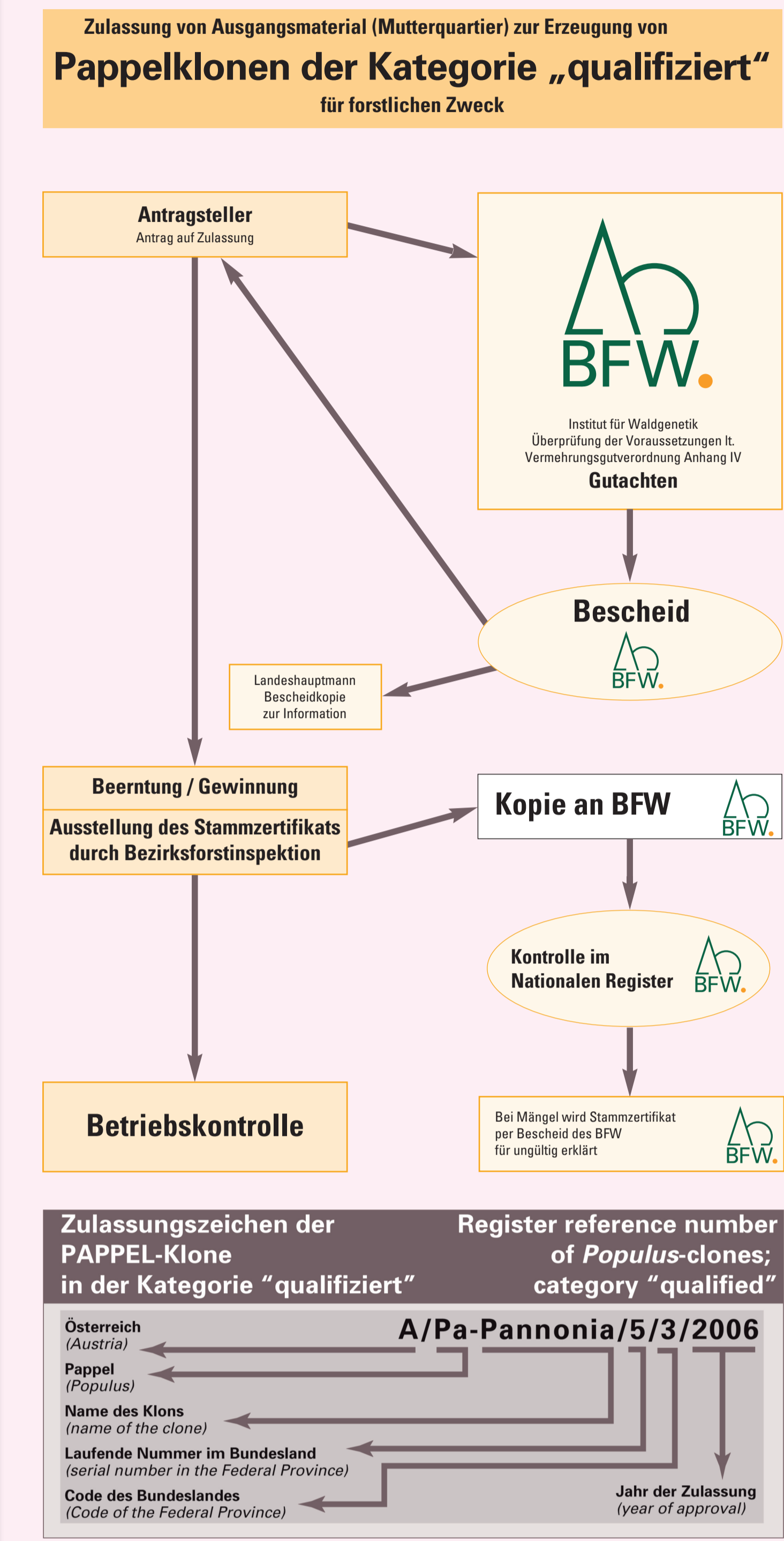
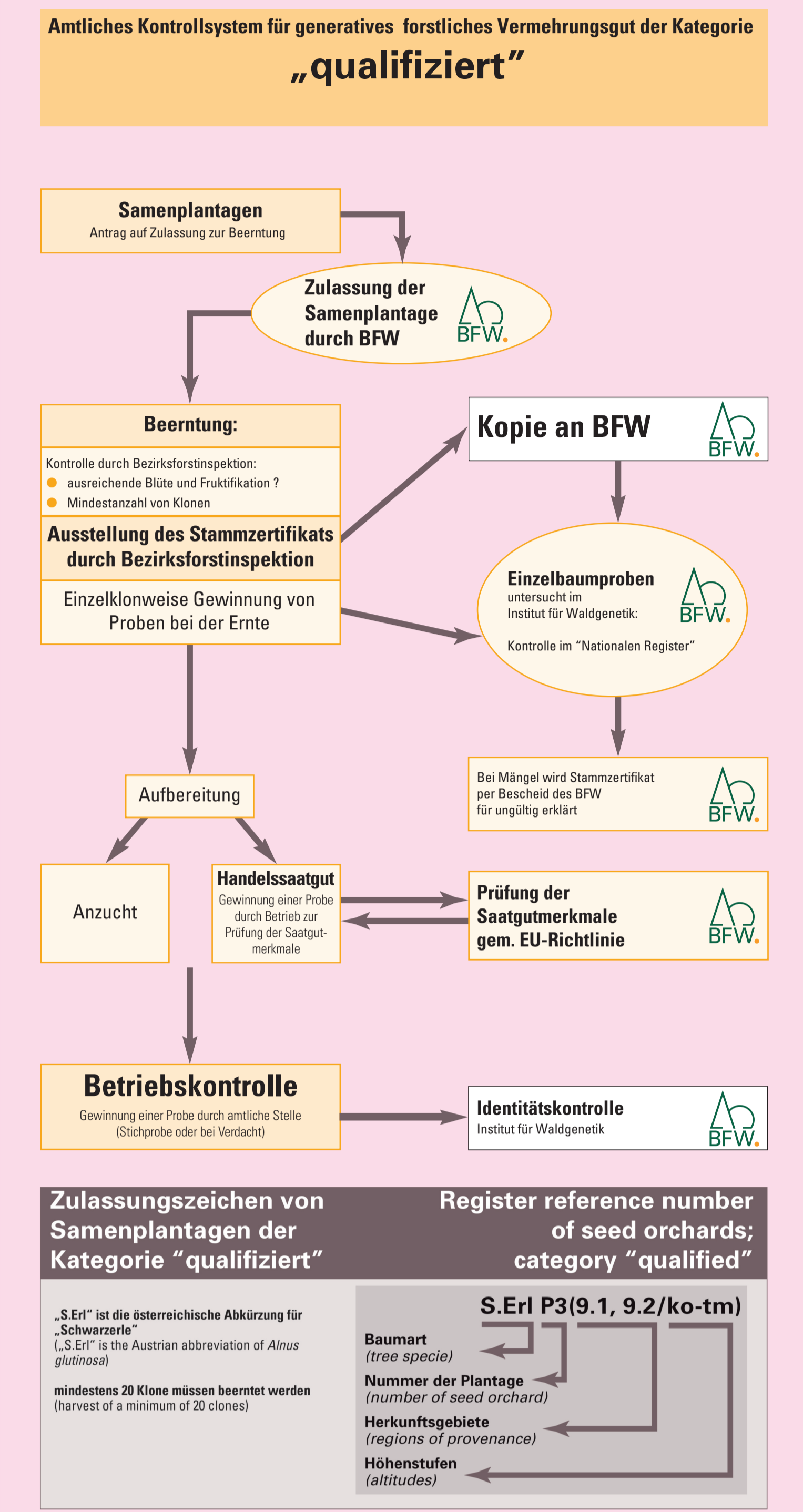
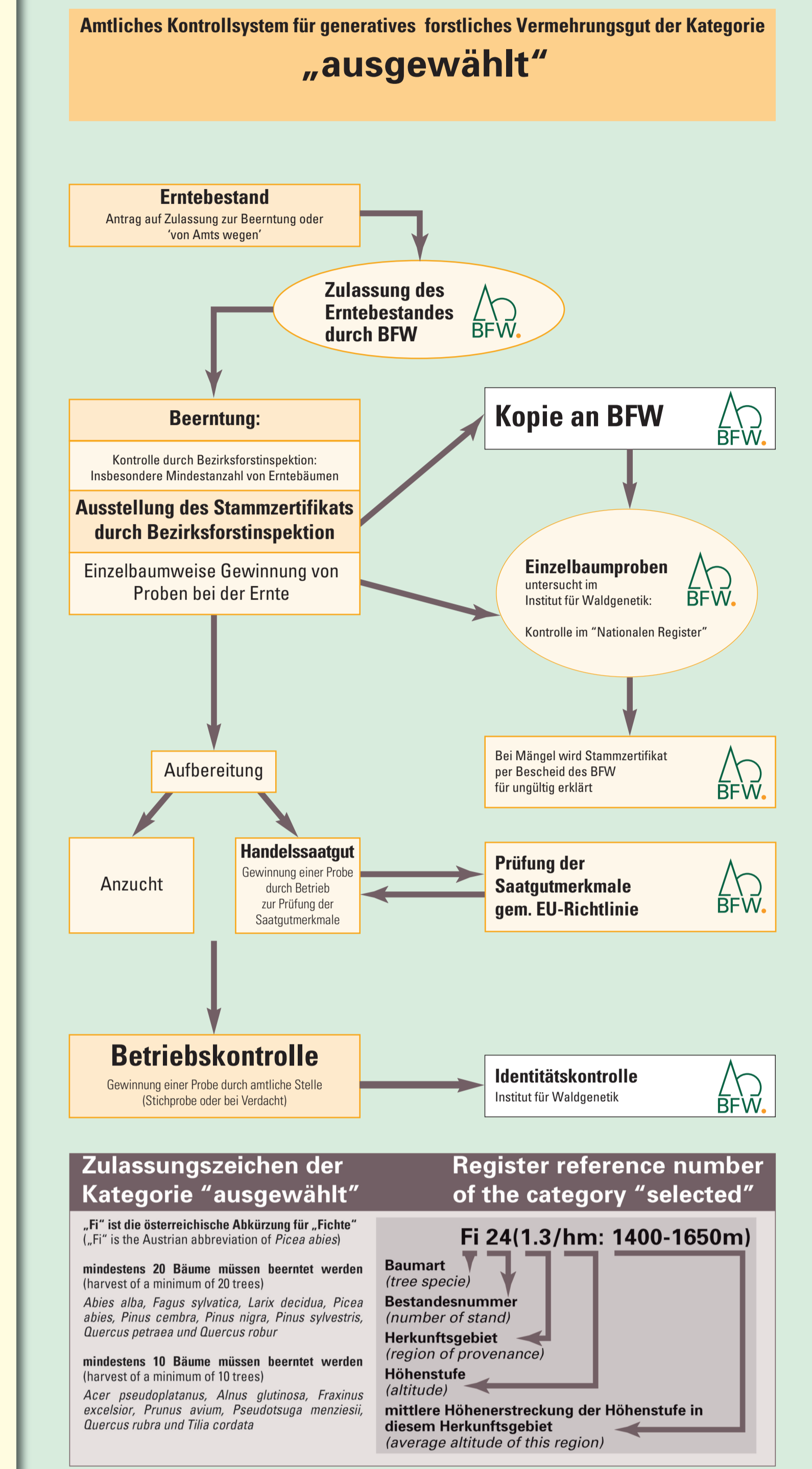
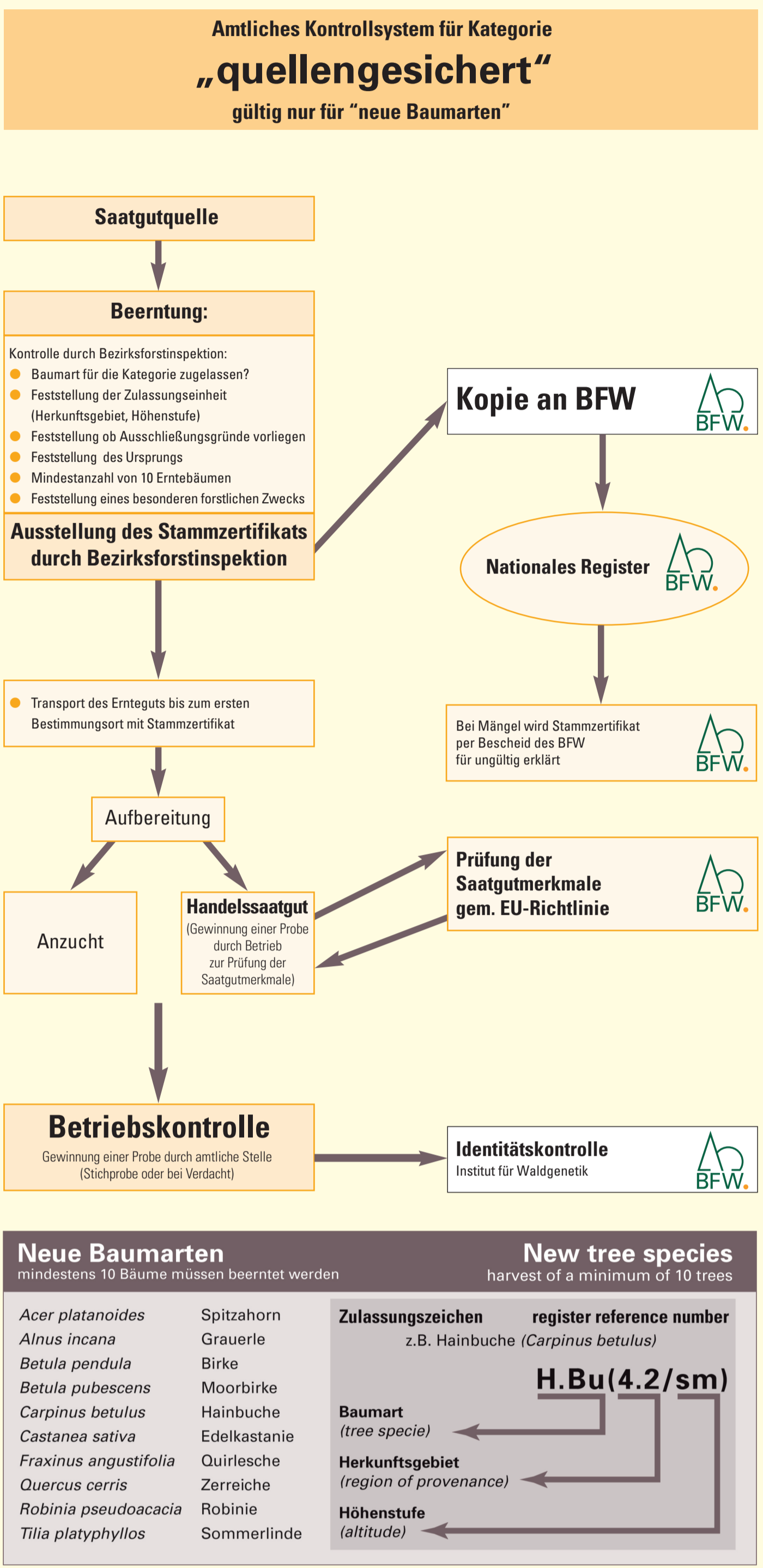




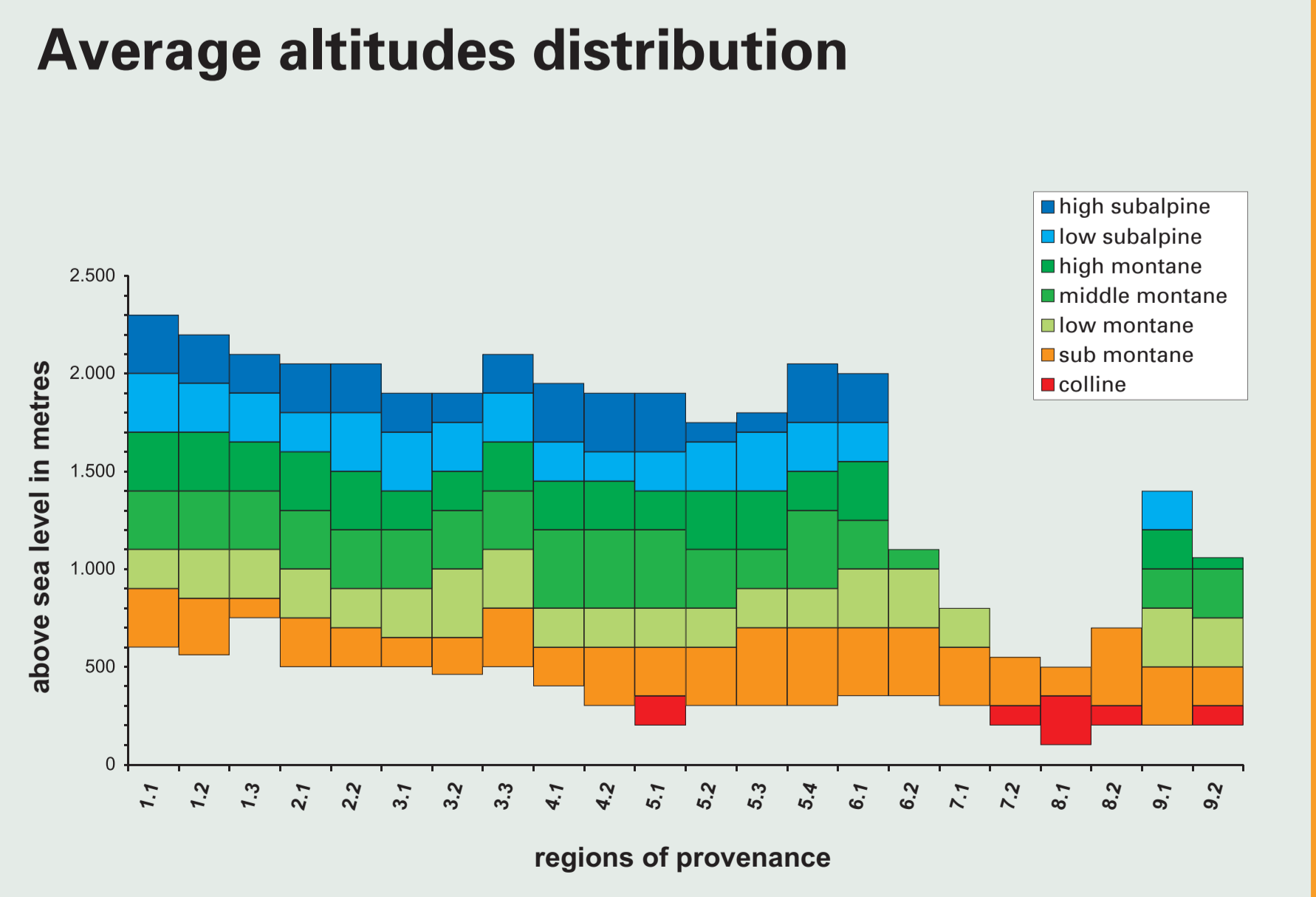
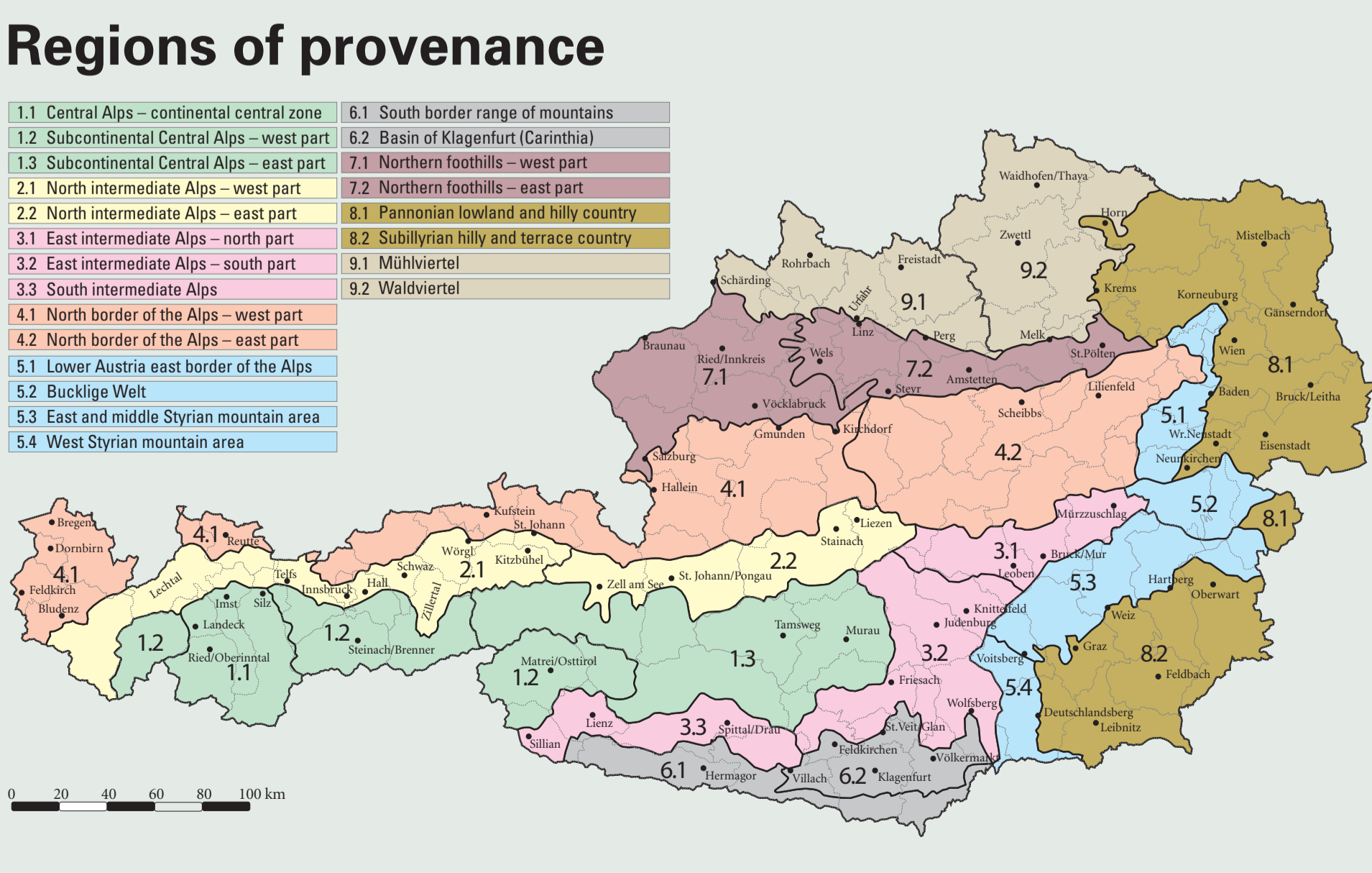
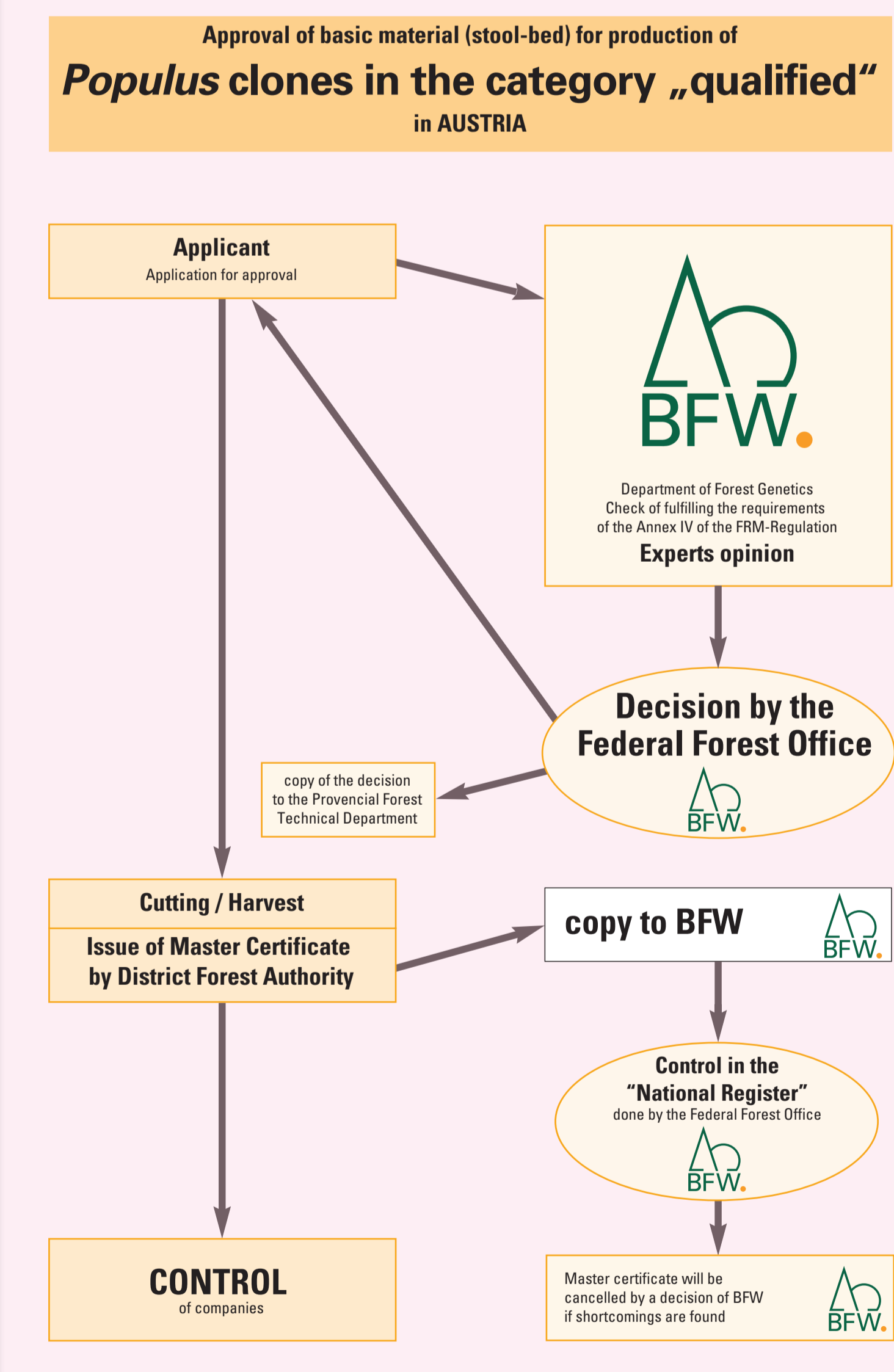
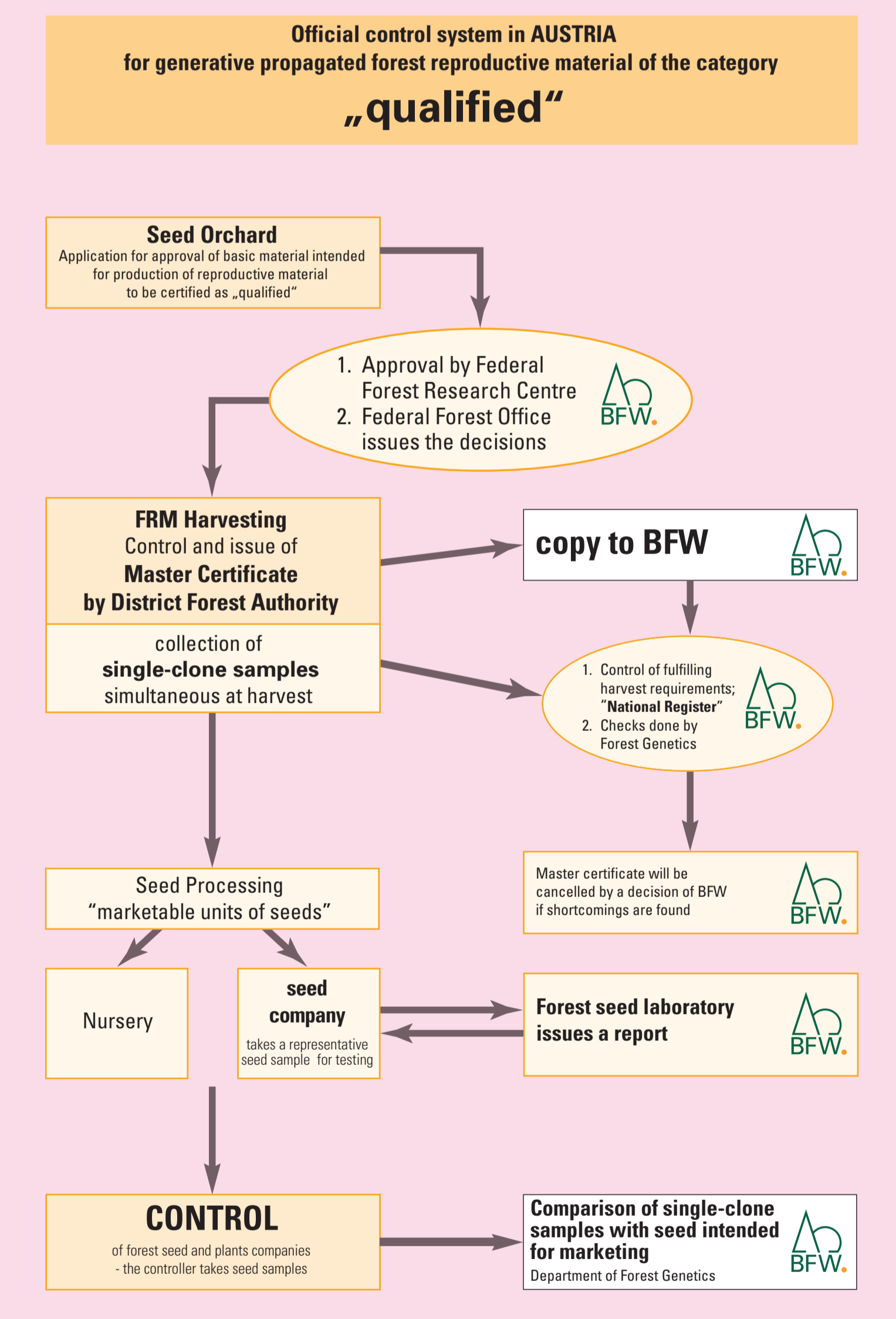
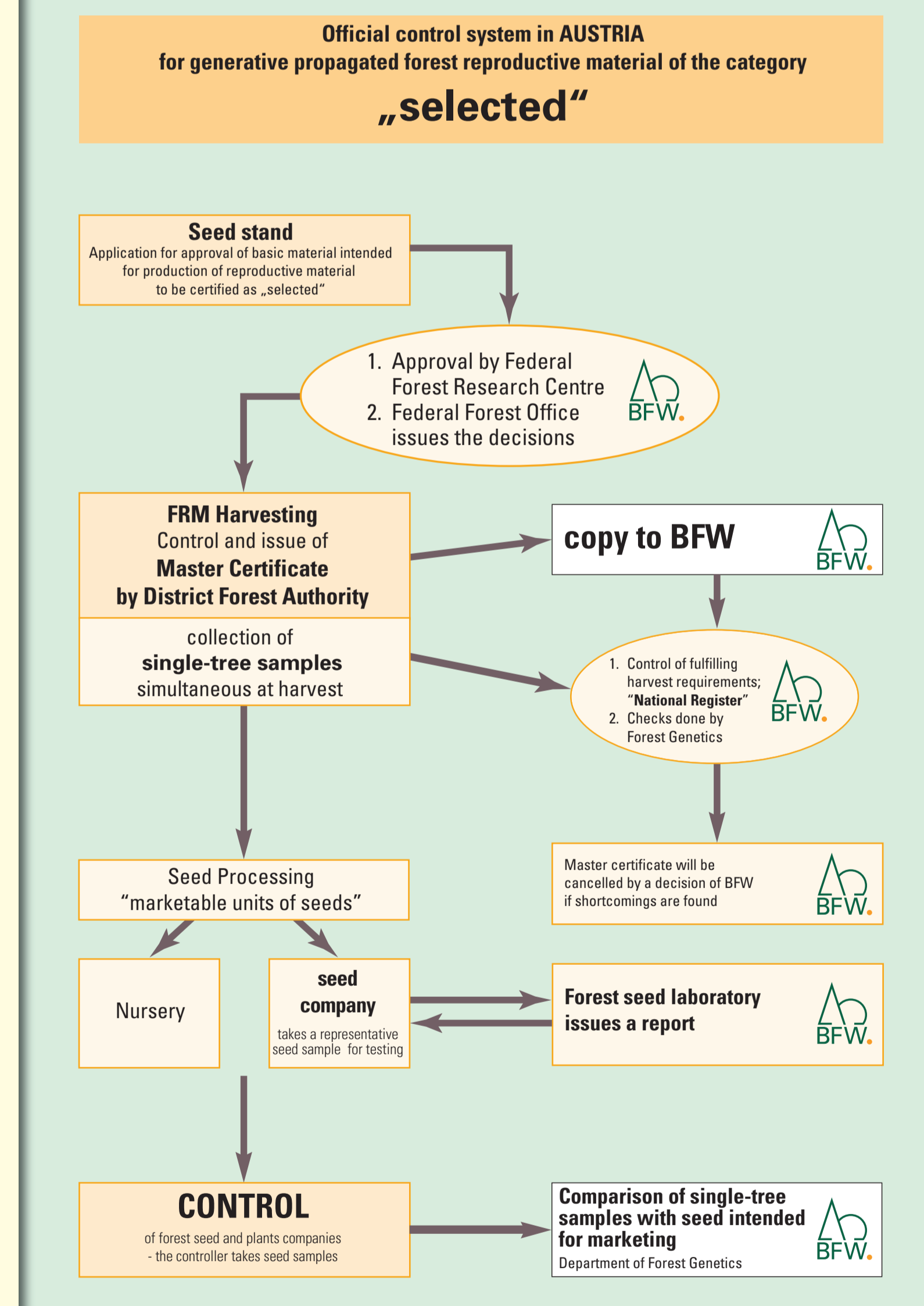
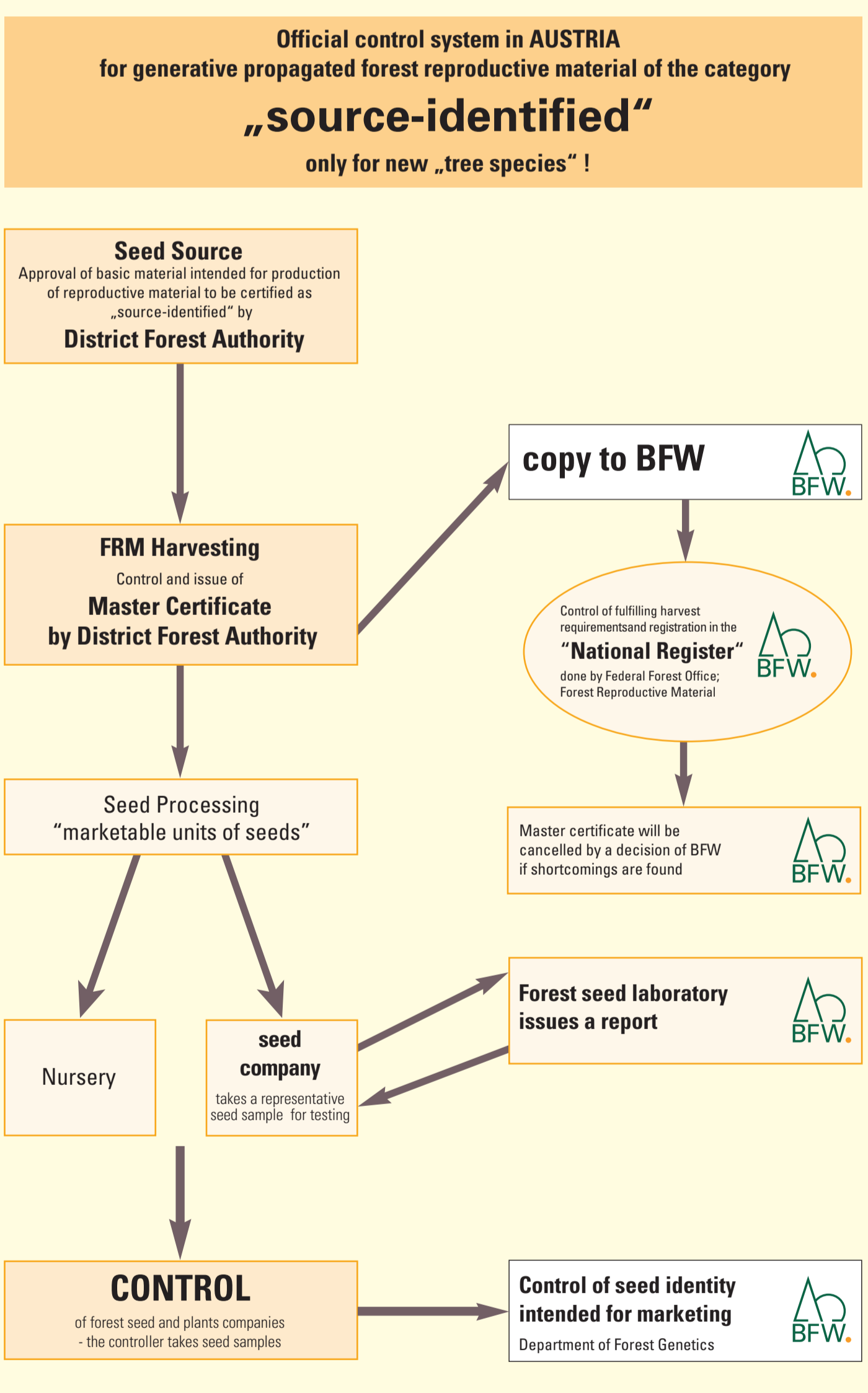
# Forstliches Vermehrungsgutgesetz in Österreich

gültig seit 1. Jänner 2003, basierend auf der Richtlinie 1999/105/EC des Rates



# Act of Forest Reproductive Material in Austria

got in force 1 January 2003, based on Directive 1999/105/EC of the Council



### Regions of Provenance, divided into altitudinal zones

(average altitude in metres)

RoP	1.1	1.2	1.3	2.1	2.2	3.1	3.2	3.3	4.1	4.2	5.1
L	ko	sm	sm	sm	sm	sm	sm	sm	sm	sm	sm
M	ts	ts	ts	ts	ts	ts	ts	ts	ts	ts	ts
H	ts	ts	ts	ts	ts	ts	ts	ts	ts	ts	ts
RoP <th>5.2</th> <th>5.3</th> <th>5.4</th> <th>6.1</th> <th>6.2</th> <th>7.1</th> <th>7.2</th> <th>8.1</th> <th>8.2</th> <th>9.1</th> <th>9.2</th>	5.2	5.3	5.4	6.1	6.2	7.1	7.2	8.1	8.2	9.1	9.2
L	ko	sm	sm	sm	sm	sm	sm	sm	sm	sm	sm
M	ts	ts	ts	ts	ts	ts	ts	ts	ts	ts	ts
H	ts	ts	ts	ts	ts	ts	ts	ts	ts	ts	ts

L = low site; M = medium site; H = high site; ko = colline; sm = submontane; ts = low subalpine; hs = high subalpine

For afforestation the suitability of forest plants from an other region of provenance depends not on „metres above sea level“ but on altitudinal zones (ko, sm, ...) - this is very significant!